



• SR 38 6" • SR 38 4"



SR 38 REVOLVER

**OWNER'S MANUAL
MAINTENANCE & SPARE PARTS LIST**

⚠ WARNING

SARSILMAZ disclaims any and all liability arising out of the use of any SARSILMAZ products (i) contrary to instructions or regulations; (ii) without caution; (iii) by any parties other than the license holder; (iv) through making unauthorized or illegal modifications thereon; (v) utilizing non-standard or out of spec cartridges; (vi) under maintenance or repair services rendered by unauthorized persons; or (vii) under any similar conditions whatsoever. SARSILMAZ excludes all liability for any injuries or property damages arising from the malicious or negligent use of products.

⚠ WARNING

All pictures, photos and definitions in this Manual are provided only for information purposes. The manufacturer reserves its right to apply changes to any models any time without prior notice as deemed necessary for improving the products or in line with any manufacturing or commercial requirements.

CONTENTS

1. GENERAL PRECAUTIONS	4	5. ADJUSTMENTS	16
2. GENERAL RULES FOR SAFETY	5	5.1. ADJUSTMENT OF SIGHT	16
3. PRODUCT AND FEATURES IDENTIFICATION	8	6. MAINTENANCE AND CLEANING	17
3.1. SUPPLIED COMPONENTS	8	6.1. MAINTENANCE AND CLEANING KIT	17
3.2. MAIN PRODUCT FEATURES	8	6.2. MAINTENANCE AND CLENING OF THE REVOLVER... ..	17
3.3. BASIC PARTS	9	7. TROUBLESHOOTING	19
3.4. TECHNICAL DATA and FEATURES	10	8. EXPLODED VIEW	20
4. PUTTING YOUR PRODUCT INTO SERVICE	11		
4.1. PRELIMINARY PREPERATION	11		
4.2. INSPECTING YOUR REVOLVER	11		
4.3. AMMUNITION	12		
4.4. FIRING	12		
4.4.1. CHECKS AND SAFETY BEFORE FIRING	12		
4.4.2. LOADING YOUR REVOLVER	13		
4.4.3. ASSEMBLING YOUR REVOLVER	13		
4.4.4. SETTING YOUR LINE OF FIRE	13		
4.4.5. FIRING	14		
4.4.6. UNLOADING YOUR REVOLVER	15		
4.4.7. RELOADING YOUR REVOLVER	15		
4.5. SECURING YOUR REVOLVER	16		
4.5.1. DROPPING THE HAMMER SAFELY	16		

1. GENERAL PRECAUTIONS

Read the instructions and warnings in this manual carefully before handling SARSILMAZ products for any purposes. As a prerequisite for SARSILMAZ products you must be familiar with and follow the information provided in this manual. Please read the instructions for safety and use thoroughly and carefully before handling the firearm. If you need any further information please consult your dealer or the factory.

Please observe the laws of your region and/or your country governing the purchasing, handling, and use of firearms.

All firearms are dangerous. Therefore, your product is sold to you provided that you comply with all instructions for use. SARSILMAZ disclaims in advance any and all responsibility for any technical damage and/or other consequences whatsoever that may be caused by; the misuse of the product, including any property damage or injury/death arising in relation to the following;

- Always keep the muzzle pointed in a safe direction.
- Firearms should be unloaded and secured when not in use.
- Do not rely on your firearm's safety.
- Be sure of your target and what's beyond it.
- Make sure that your ammunition matches the caliber or gauge of your gun.
- If your pistol fails to fire when the trigger is pulled, keep muzzle pointed in a safe direction for at least 10 seconds, if round does not fire, rack slide to eject faulty cartridge. Once ejected continue firing.
- It is your responsibility to ensure that you are in compliance with all applicable laws and ordinances regarding the use of your firearm.
- Other factors directly or indirectly of beyond our control.

2. GENERAL RULES FOR SAFETY

2.1. ALWAYS KEEP YOUR FIREARM POINTED IN A SAFE DIRECTION.

Never point a firearm at yourself or anyone. This is particularly important when loading or unloading the firearm. Always be aware of what is behind your target. If you miss or hit your target, it is your responsibility to ensure your shot will not cause unexpected injuries or damages.

2.2. ALWAYS TREAT EVERY FIREARM AS IF IT IS LOADED.

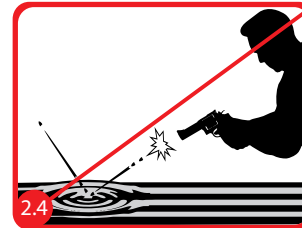
Do not take anyone's word that the firearm is unloaded – always check for yourself. Assume your firearm is ready to fire unless you have visually checked that the firearm is unloaded.

2.3. HIDE YOUR GUN OUT OF CHILDREN'S SIGHT.

It is your responsibility that your firearm is not accessible to children and other unauthorized persons. It is highly recommended that you store your firearm unloaded and secured with ammunition stored separately. This will ensure minimizing the risk of accidents involving children and unauthorized persons.

2.4. NEVER SHOOT AT HARD SURFACES OR WATER.

Shooting at water or hard surfaces can cause changes in the direction of the bullet which may result in injuries of your own, others, and/or property damage.



2.5. NEVER USE ALCOHOL OR DRUGS THAT MAY IMPAIR MENTAL OR PHYSICAL ABILITY WHILE SHOOTING/ HANDLING FIREARM.

Do not use your firearm if you are impaired by alcohol, drugs, and/or medications that will hinder your physical and mental abilities.

2.6. FOLLOW PROPER MAINTENANCE PROCEDURES FOR YOUR FIREARM

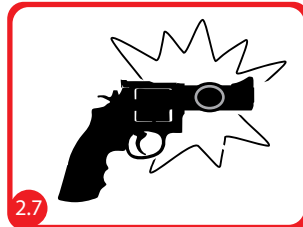
In order to prevent accumulation of dirt or dust on operating parts, store your firearm in its original case once properly cleaned. Lubricate and clean your gun after every use following the instructions in order to avoid any corrosion, barrel damage, and dirt. Before loading the barrel, always check to see if it is completely clean (completely free from any obstructions such as dirt, mud, oil, ammunition or ammunition residuals). Shooting against an obstruction can cause an increase in pressure and may damage your firearm and cause injury to yourself and others. If the operation of your handgun has changed the way it sounds, stop firing, make sure the firearm is pointed in a safe direction, and unload the firearm. Check the chamber and barrel bore for any failure. Using incorrect types or calibers of ammunition may cause the firearm to jam.

2.7. USE PROPER AMMUNITION.

Only use factory-loaded ammunition that is newly manufactured within industrial specifications. Ensure all cartridges used are compatible with the caliber and type of your firearm. Avoid using MP5 bullets!

2.8. ALWAYS WEAR SAFETY GLASSES AND EAR PROTECTORS SPECIFIED FOR FIREARM USE.

A shooter should always wear impact-resistant safety glasses and ear protectors when using any firearms to prevent hearing and sight damage.



2.9. OBSERVE THE RULES!

Observe all local and general rules regarding the handling, use and transportation of firearms.

2.10. ENSURE THAT YOU HAVE A FULL UNDERSTANDING OF THE SAFETY FEATURES OF YOUR PISTOL.

Never rely on only the safety to prevent accidents. It is your obligation to make yourself familiar with and utilize the safety features of your gun. The best way to prevent accidents is to follow the rules for safety and safe handling procedures defined in the product manual.

2.11. NEVER ALLOW A FIREARM TO BE USED BY INDIVIDUALS THAT DO NOT UNDERSTAND ITS SAFE OPERATION OR HAVE NOT READ THESE FIREARM SAFETY RULES.

2.12. NEVER LEAVE A FIREARM UNATTENDED AND IN REACH OF AN UNAUTHORIZED PERSON. THIS MAY RESULT IN THEFT OR MAY EVEN POSE A THREAT TO OTHERS, CAUSING DAMAGE OR EVEN DEATH. ALL RESPONSIBILITY WILL BE YOURS.

2.13. IT IS IMPERATIVE THAT YOU KEEP YOUR FIREARM UNLOADED IN A SAFE AND SECURED LOCATION.

2.14. NEVER ATTEMPT TO REMOVE AN OBSTRUCTED PROJECTILE IN THE BARREL BORE THROUGH FIRING ANOTHER ONE. UNLOAD FIREARM AND SEEK A QUALIFIED GUNSMITH.

2.15. MAKE SURE YOU ARE FAMILIAR WITH THE OPERATIONS BEFORE USING AND LOADING THE FIREARM.

2.16. ALLOW ONLY AUTHORIZED/QUALIFIED GUNSMITHS TO UNDERTAKE REPAIR PROCEDURES.

2.17. IT IS BOTH DANGEROUS AND FORBIDDEN TO MAKE MECHANICAL MODIFICATIONS ON ANY PART OF THE FIREARM. PLEASE NOTE THAT ANY PRODUCTS TREATED THIS WAY WILL BE EXCLUDE THE ENTIRE FIREARM FROM WARRANTY.

2.18. USER OF THE FIREARM SHOULD STAND AT A REASONABLE DISTANCE FROM OTHER PERSONS.

2.19. AVOID SQUEEZING THE TRIGGER IN EXCESS.

3. PRODUCT AND FEATURES IDENTIFICATION

3.1. SUPLIED COMPONENTS

The package supplied includes;

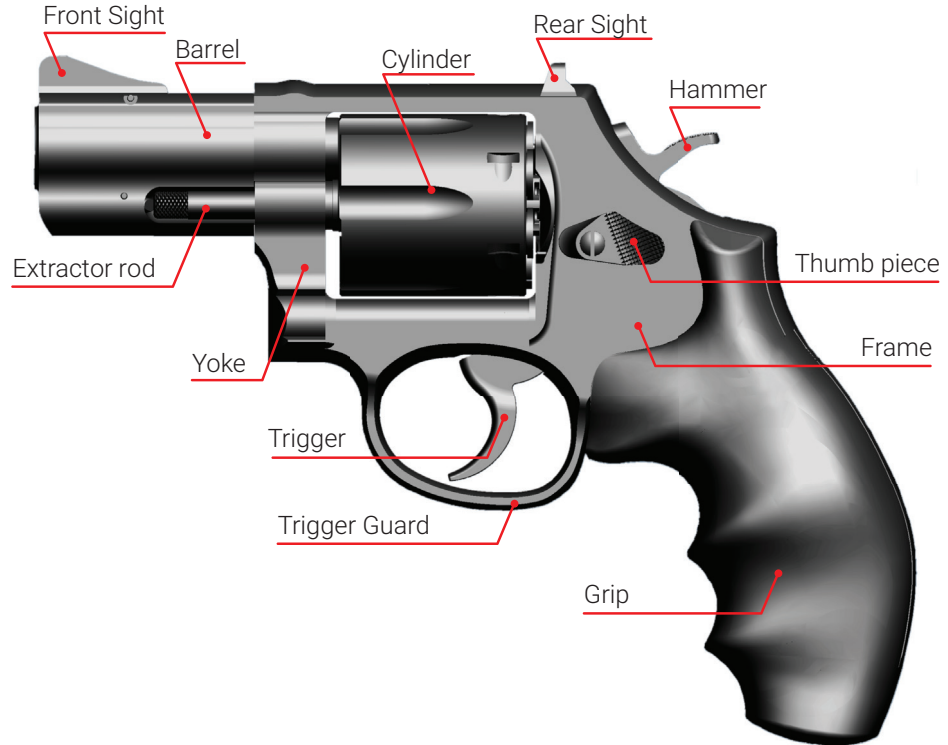
- 1 revolver carrier case
- 1 revolver
- 1 use and maintenance manual
- 1 cleaning kit
- 1 gun lock



3.2. MAIN PRODUCT FEATURES

Steadfast guns are manufactured with state-of-the-art technology in accordance with the experiences gained in the production of modern small arms suitable for use in shooting sports, police, military and civil environments. Your gun has a mechanic lock system and operated with semi-automatic firing system. It has Double Action (DA) feature. You can carry your gun safely thanks to the hammer safety system in your gun. It is possible to identify the target and shoot accurately thanks to adjustable sight (it might vary according to the model) and ergonomic handle.

3.3. BASIC PARTS



3.4. TECHNICAL DATA and FEATURES

MODEL	SR-38 4"	SR-38 6"
CALIBER	.38 spc/.357 mag	.38 spc/.357 mag
MECHANISM	Double Action	Double Action
CAPACITY	6	6
BARREL LENGTH	4"	6"
OVERALL LENGTH	9.4"	11.4"
OVERALL HEIGHT	5.9"	5.9"
OVERALL WIDTH	1.5"	1.5"
WEIGHT	40.7 oz	46.9 oz
SPECIFICATIONS	Alloyed Forged Steel & Forged Stainless Steel Frame Adjustable Rear Sight Hammer Safety	Alloyed Forged Steel & Forged Stainless Steel Frame Adjustable Rear Sight Hammer Safety

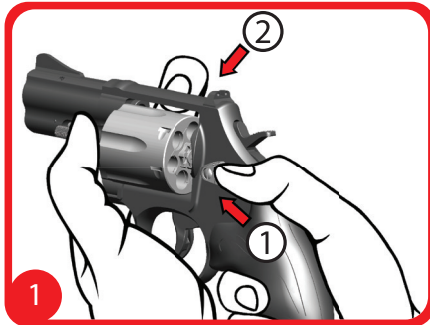
4. PUTTING YOUR PRODUCT INTO SERVICE

4.1. PRELIMINARY PREPERATION

The guns are generally protected with a thin layer of oil, the layer of oil must be cleaned before usage. Before using your gun clean the inside of the barrel with a cleaning rod and patch.

4.2. INSPECTING YOUR REVOLVER

- a. Press the thumb piece on the left side of the gun. This operation will release the cylinder lock. Push the cylinder to the left side with your right hand. Once complete, the cylinder is opened. (Figure 1)
- b. You can easily see whether there is any ammunition in the opened cylinder. (Figure 2)



4.3. AMMUNITION

- Use only original and high quality cartridges.
- Cartridges to be used must be compatible with your gun's caliber.
- Remember that the hand-loaded or other non-standard cartridges will be excluded from the scope of the warranty.

4.4. FIRING

4.4.1. CHECKS AND SAFETY BEFORE FIRING

- Always aim the gun in a non-dangerous direction.
- When you take the gun in your hand, keep your finger off the trigger, but on the trigger guard. (Figure 3)
- Check and make sure that there is not any foreign material inside the barrel.
- If any, remove the excessive oil inside the gun.
- Loading and unloading the gun in a car, inside a building or similar narrow and closed areas (except shooting galleries) must strictly be avoided.



4.4.2. LOADING YOUR REVOLVER

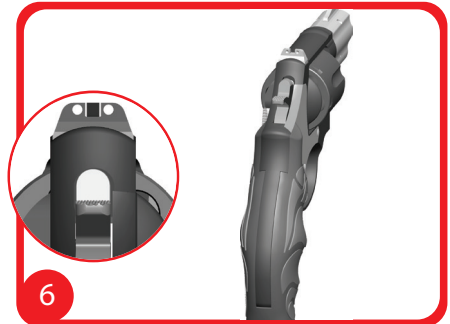
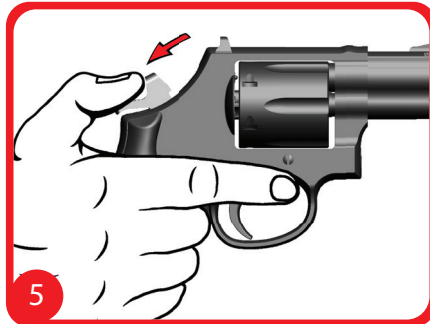
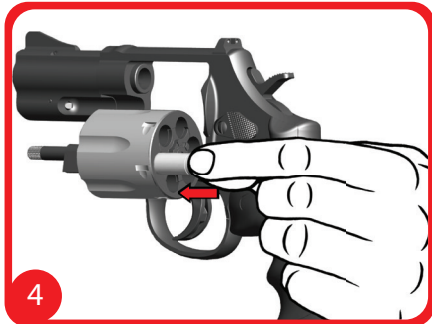
- a. Press the thumb piece. Remove the cylinder by pushing to the left side.
- b. Insert the ammunition suitable to the caliber of the gun inside the open cylinder. (Figure 4)
- c. Close the cylinder until it locks.
- d. Your gun is now loaded. Keep your finger away from the trigger.

4.4.3. ASSEMBLING YOUR REVOLVER

- e. You can set your gun by pulling the hammer back. (Figure 5)
- f. Since the gun has Double Action feature, you can fire your gun by pulling the trigger directly without setting it.

4.4.4. SETTING YOUR LINE OF FIRE

The target line is established by aligning the rear and front sight. (Figure 6)

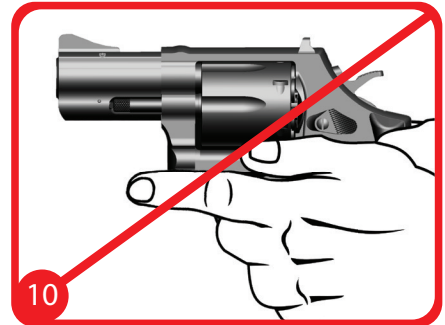
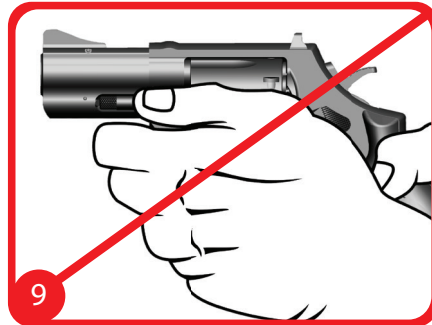
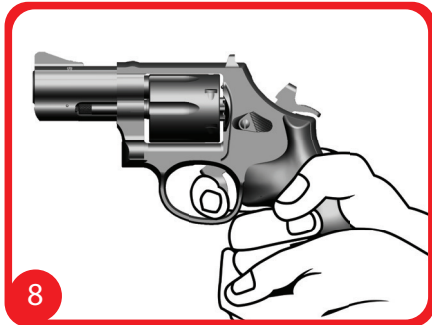
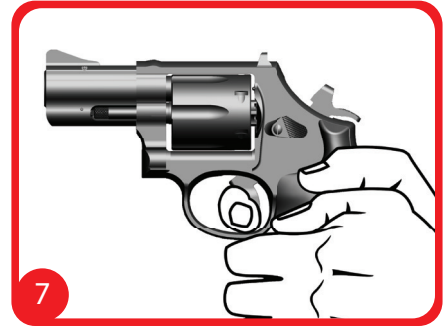


△ WARNING

When the gun is loaded, make sure that you aim the barrel to a safe direction. Keep your finger away from the trigger when you preparing to fire the gun.

4.4.5. FIRING

- Complying with the shooting techniques will help you tshoot more accurately.
- Aim the gun at the target.
- Put your finger on the trigger and pull it slowly. (Figure 7 - 8)
- When pulling the gun, don't hold it in a way that it blocks cylinder movement. Cylinder must rotate each time you pull the trigger. (Figure 9 - 10)
- Keep the gun aimed at the target until all your shots are complete.



4.4.6. UNLOADING YOUR REVOLVER

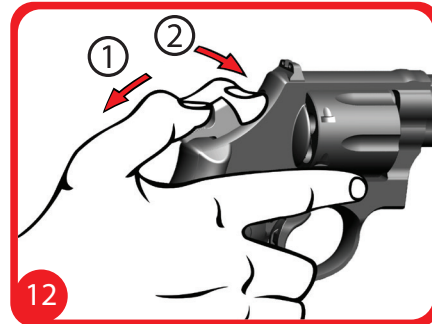
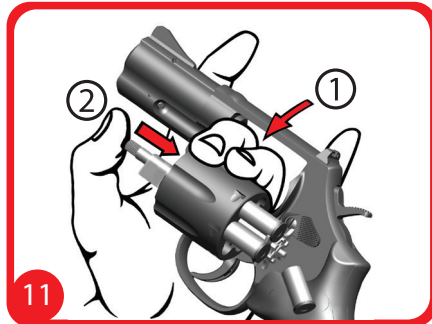
- a. Press the thumb piece. Remove the cylinder by pushing to the left side.
- b. You can eject the cartridges from the cylinder by pushing the ejector rod. This way, you can take the cartridges from the cylinder easily. (Figure 11)

4.4.7. RELOADING YOUR REVOLVER

Repeat the actions described in "LOADING THE GUN" section in order to reload your gun after all your shots are complete. (Figure 4)

⚠ WARNING

All the responsibility for the gun belongs to the owner. Secure the gun and don't forget that your gun is loaded and ready to shoot unless completely convinced otherwise. If you are not ready to shoot, don't push the magazine to the barrel. Always keep your gun empty, secured and store the ammunition in a separate location.



4.5. SECURING YOUR REVOLVER

4.5.1. DROPPING THE HAMMER SAFELY

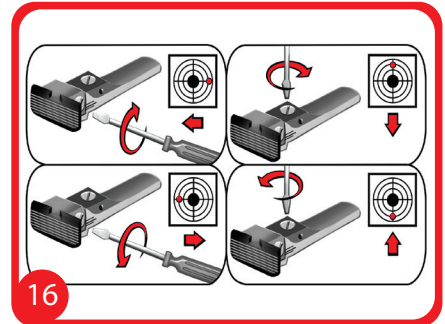
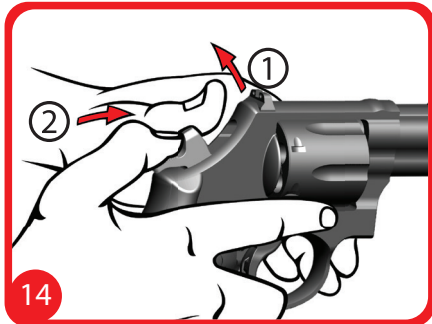
If you set the hammer but decided not to shoot, you can drop the hammer safely by complying with the following steps.

- Hold the hammer with the thumb of one hand. But keep your finger away from the trigger. Keep the thumb of your other hand in front of the hammer in a way that it blocks the hammer. (Figure 12)
- Pull the trigger slightly and release the hammer and move your finger away from the trigger. (Figure 13)
- Place your finger in front of the hammer and release the hammer with the other thumb that holds the hammer. (Figure 14 - 15)

5. ADJUSTMENTS

5.1. ADJUSTMENT OF SIGHT

Two different adjustments, namely, windage and elevation adjustment can be made with the models which are equipped with adjustable back sight. (Figure 16)



△ WARNING

Your gun doesn't need to be disassembled for maintenance and it isn't recommended. Guns, which are subjected to such an operation will be outside the scope of warranty. Other maintenance and repair operations must be performed at authorized service centers

6. MAINTENANCE AND CLEANING

6.1. MAINTENANCE AND CLEANING KIT

Cleaning and maintenance kit provided with your gun includes the following.

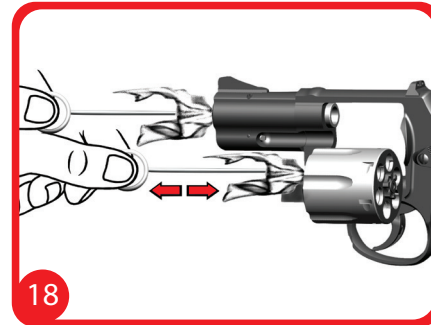
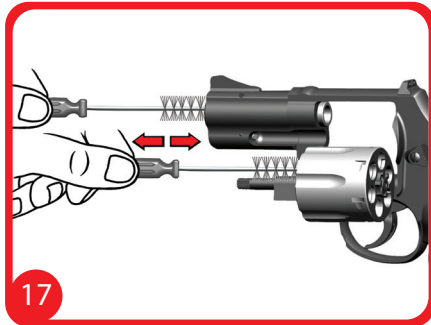
- Bristle Brush
- Orlon Brush
- Cleaning Rod

6.2. MAINTENANCE AND CLENGING OF THE REVOLVER

It is very important to be well-informed on the maintenance and cleaning of the gun. Experiences has shown that most of the problems that occur while operating the gun stems from maintenance errors. It is essential to clean, lubricate and protect your gun. These operations determine whether the gun will function appropriately when you need it.

- When you receive the gun, check and make sure that it is empty.
- Clean the gun of any heavy and adhesive materials in the first maintenance.
- Make sure that all gunshot residues are cleaned. Clean the parts, which are not easy to access, with a small brush, cloth and dust dissolving liquids.
- Don't use corrosive and metal objects for cleaning.
- Check the whole surface of the gun during cleaning. Make sure that there is no stripping or corrosion on the chrome plating.

- f. Clean the barrel and cylinder thoroughly by means of a cleaning rod. **(Figure 17)**
- g. Clean the barrel and cylinder by using a dust solvent and soaked cloth. Repeat this action by using a clean and dry cloth. **(Figure 18)**
- h. Lubricate the cylinder, barrel and all the moving parts of the gun with a slightly lubricated cloth. Take off any excessive oil with a dry cloth.
- i. Make sure that the gun works properly.
- j. Perform a general cleaning of the gun after shooting. Clean the powder residue that accumulates on the gun with a dust solvent liquid.



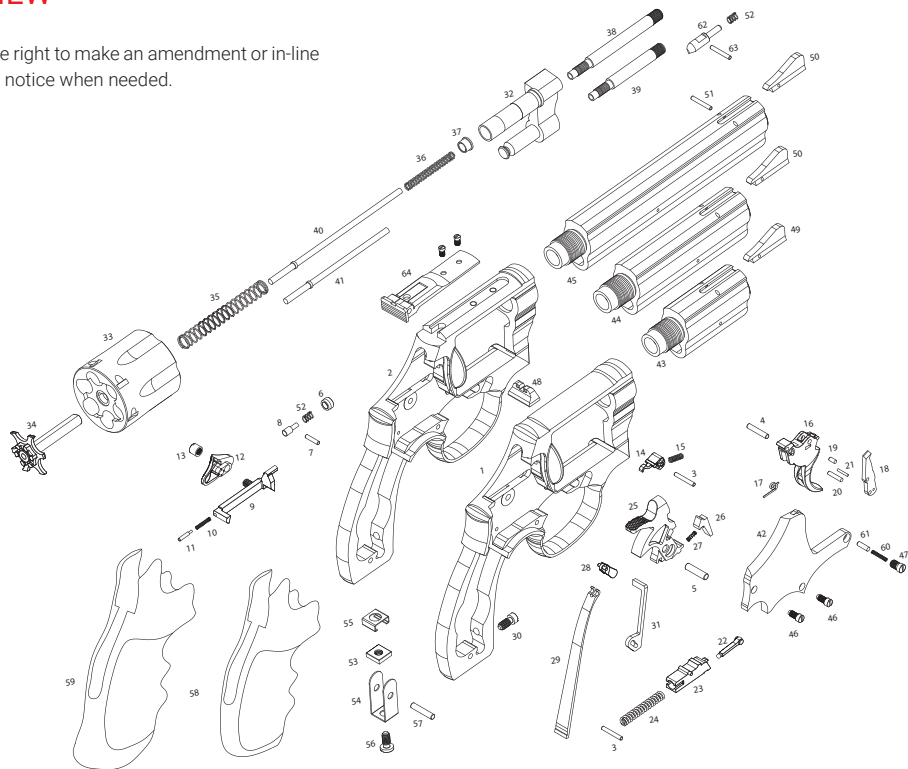
7. TROUBLESHOOTING

Malfunction in firing the firearm or operational failures stem from incorrect maintenance or use of wrong magazine.

The following table outlines the problems and their reasons as well as suggestions with respect to firing.		
PROBLEM	REASON	SOLUTION
If the revolver doesn't function.	Contaminated cylinder and barrel	Unload and clean the revolver. Gunshot residues accumulating in the revolver may prevent your revolver from functioning properly.
	Grip error	Refer to the use manual.
	Wrong ammunition	Unload the cartridges in the cylinder Continue shooting with the correct cartridges.
	Incorrect use of the trigger	After pulling the trigger, release it back completely. Otherwise, you can't shoot the revolver for the second time since the mechanism is not reset.
	The cylinder is not closing	Cartridge might not fit in the cylinder. Make sure that cartridges fit in the cylinder.
	The revolver is not lubricated	Lubricate your gun with high quality gun oils in a sufficient amount. Too much lubrication leads to excess fouling.

8. EXPLODED VIEW

Note: Sarsilmaz reserves the right to make an amendment or in-line change on features without notice when needed.



PART LIST

NUMBER	PART NAME	NUMBER	PART NAME
1	FRAME	33	CYLINDER
2	FRAME	34	EXTRACTOR
3	CYLINDER STOP PIN	35	EXTRACTOR OUTER SPRING
4	TRIGGER PIN	36	EXTRACTOR INNER SPRING
5	HAMMER PIN	37	EXTRACTOR ROD COLLAR
6	FIRING PIN HOLDER	38	EXTRACTOR MILE
7	FIRING PIN RETAINING PIN	39	EXTRACTOR MILE
8	FIRING PIN	40	EXTRACTOR PIN
9	BOLT	41	EXTRACTOR PIN
10	BOLT SPRING	42	SIDE PLATE
11	BOLT PIN	43	BARREL
12	THUMB PIECE	44	BARREL
13	THUMB PIECE SCREW	45	BARREL
14	CYLINDER STOP	46	SIDE PLATE SCREW
15	CYLINDER STOP SPRING	47	YOKE SCREW
16	TRIGGER	48	REAR SIGHT
17	HAND SPRING	49	FRONT SIGHT
18	HAND	50	FRONT SIGHT
19	HAND PIN	51	FRONT SIGHT PIN
20	HAND PIN	52	FRONT SIGHT PIN SPRING
21	HAND PIN	53	GRIP FIXING SCREW
22	TRIGGER ARM	54	GRIP FIXING PLATE
23	TRIGGER SEAR	55	GRIP FIXING LID
24	TRIGGER SEAR SPRING	56	GRIP SCREW
25	HAMMER	57	GRIP PIN
26	SEAR	58	RUBBER GRIP
27	SEAR SPRING	59	RUBBER GRIP
28	MAIN SPRING ARM	60	YOKE RETAINING PIN SPRING
29	MAIN SPRING	61	YOKE RETAINING PIN
30	MAIN SPRING SCREW	62	CENTRING LOCK
31	TRANSFER BAR	63	CENTRING LOCK PIN
32	YOKE	64	ADJUSTABLE REAR SIGHT

1-877-SAR-GUNS
1-877-727- 4867
www.sarusa.com